

## SPEC SHEET + MEASUREMENTS

**DISTRICT**

District® Youth V.I.T.™ Fleece Crew. DT6104Y

### Product photo



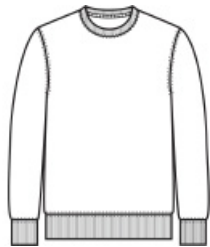
An ideal canvas for decorators, this soft fleece is everything and more at an unbeatable value.

- 8.3-ounce (280 GSM)
- 65/35 ring spun cotton/polyester, 3-end fleece
- 60/40 ring spun cotton/polyester, 3-end fleece (Heathers and Royal Frost)
- 100% ring spun cotton face (Solids, Light Heather Grey)
- Dyed-to-match twill neck tape
- 1x1 rib knit collar, cuffs and hem
- Side seamed
- Tear-away label

### CARE INSTRUCTIONS

Machine Wash Cold With Like Colors. Only Non-Chlorine Bleach When Needed. Tumble Dry Low. Warm Iron If Necessary.

### Sketches



front



back

## PRODUCT MEASUREMENTS

---

	XS	S	M	L	XL
Body Length at Back	19	21	23	25	27
Chest	14	15 1/2	17	18	19 1/2
Size	4/5	6/8	10/12	14/16	18/20
Sleeve Length from Center Back	23	26	28 1/2	31	34

**Body Length at Back:** Measured from high point shoulder to finished hem at back.

**Chest:** Measured across the chest one inch below armhole when laid flat.

**Sleeve Length from Center Back:** Measure from Center Back neck to shoulder point to sleeve hem.

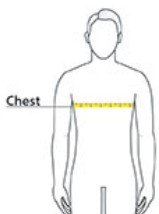
## SIZE CHARTS

---

	XS	S	M	L	XL
Chest	22-24	25-27	28-30	30-32	32-34
Size	4/5	6/8	10/12	14/16	18/20

## HOW TO MEASURE

---



### CHEST

Measure under the arm and around the fullest part of the chest with arms down, keeping tape horizontal.

## COLORS

---

Please note: PMS code information is shown only when an exact match is available.



Black  
PMS BLACK C



Classic Red  
PMS 200C



Deep Royal  
PMS 7687C



Forest Green  
PMS 7736C



Heathered  
Charcoal



Light Heather  
Grey



New Navy  
PMS 533C



Royal Frost